

Balmoral

Designer Light Filtering & Blackout



TEXSTYLE



Balmoral

Balmoral offers a complete styling solution with elegant colors and a premium design aesthetic. Its specialty weave creates a light modern texture and provides a subtle mix of natural colors that elevates any space. Offered in coordinating light filtering and blackout colors, you can select the level of privacy that is needed.

Features

- Luxurious designer aesthetic
- Available in 13 matching light filtering and blackout colors
- GREENGUARD Gold and OEKO-TEX Standard 100 certified
- Can be used with Roller, Roman, and Panel Track systems
- Available in a versatile 118" width
- PVC free, lead free, and phthalate free

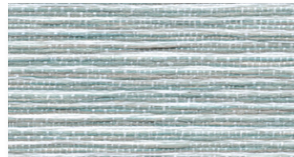
Colors



ARMOUR



CHROME



PLATINUM



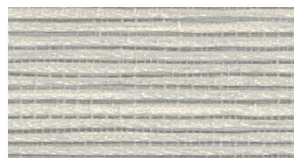
WHITE



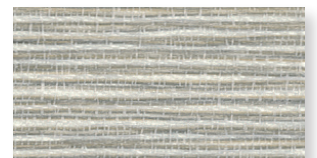
PEARL



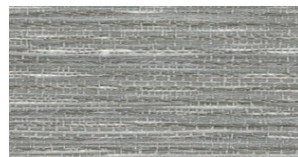
BIRCH



PUTTY



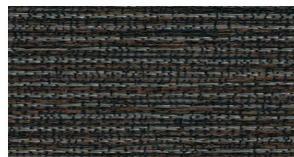
CONCRETE



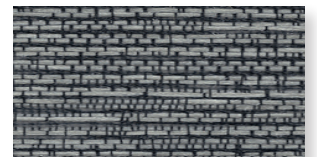
DOVE



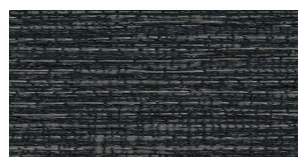
PYRITE



BOURNEVILLE



STEEL



JET

Balmoral

Designer Light Filtering & Blackout



Specifications

	Light Filtering	Blackout
Composition	100% Polyester	100% Polyester with Acrylic Foam Backing
Openness	Approximately 6%	Blackout
Weight	6.49 oz/yd ² (220 g/m ²)	11.50oz/yd ² (390 g/m ²)
Thickness	0.022 in (.55mm)	0.023in (.60mm)
Light fastness	≥ 5 (Blue Wool Scale)	
Average length	22yd/roll (20m)	
Width	118" (3m)	
Cutting	Cold Cutting or Ultrasonic Cutting	
Welding	Tape Recommended. 320-356°F (160-180°C), Test first.	
Railroadable	No	
Cleaning	Vacuum cleaning and/or gentle wiping with a sponge and mild soap. Do not soak, do not use any other solvents, and do not rub.	

Thermal and Optical Factors

COLOR	THERMAL FACTORS					OPTICAL FACTORS
	Ts	Rs	As	Single Glass Reference Glazing A [g window 0.85] [U window 5.7] g-total	High Performance Glass Reference Glazing D [g window 0.32] [U window 1.1] g-total	Tv
Blackout	0	83	17	0.23	0.23	0
White LF	46	54	0	0.46	0.26	47
Dove LF	25	34	41	0.55	0.28	21
Concrete LF	37	42	21	0.52	0.27	34
Pearl LF	46	53	1	0.47	0.27	47
Birch LF	40	48	12	0.49	0.27	39
Puffy LF	40	48	12	0.49	0.27	39
Pyrite LF	17	21	62	0.61	0.29	15
Bourneville LF	10	11	79	0.66	0.30	9
Steel LF	13	17	70	0.63	0.29	11
Jet LF	7	8	85	0.68	0.30	6



PVC FREE



LEAD FREE



FORMALDEHYDE FREE



PHTHALATE FREE



FRAGRANCE FREE



PRINTABLE